

Pittsburg County, Oklahoma
COUNTY PURCHASING OFFICE
 Pittsburg County Court House
 McAlester, Oklahoma
 Phone: (918) 423-4934

INVITATION TO BID

PLEASE REVIEW TERMS AND CONDITIONS ON REVERSE SIDE RELATING TO SUBMISSION OF THIS BID.

Notarized Affidavit completions and signature required on reverse side.

DATE ISSUED	31-Jan-22
PAGE 1 OF	

BID NUMBER BID # 16	BID CLOSING DATE AND HOUR February 25th, 2022 @ 4:00pm	REQUIRED DELIVERY DATE <small>Days after award of Purchase Order</small>
-------------------------------	--	---

TERMS:	DATE OF DELIVERY:
--------	-------------------

Item	Quantity	Unit of issue	DESCRIPTION	Unit Price	Total
			<p>Pittsburg County wishes to advertise for the following project:</p> <p>Outdoor Facilities at the Pittsburg County Expo Center Facilities to include restrooms, concession and storage areas</p> <p><u>See Specifications Attached</u></p> <p><u>IF BID IS NOT RETURNED IN THE ENCLOSED ENVELOPE OR IS PLACED IN A FEDEX, UPS OR USPS SHIPPING ENVELOPE, PLEASE MARK ON THE OUTSIDE OF THE ENVELOPE "SEALED BID" & BID NUMBER.</u></p>		

TERMS AND CONDITIONS

1. Sealed bids will be opened in the Commissioner's Conference Room, Pittsburg County Courthouse, McAlester, Oklahoma, at the time and date shown on the invitation to bid form.
2. Late bids will not be considered. Bids must be received in sealed envelopes (one to an envelope) with bid number and closing date written on the outside of the envelope.
3. Unit prices will be guaranteed correct by the bidder.
4. Firm prices will be F.O.B. destination.
5. Purchases by Pittsburg County, Oklahoma, are not subject to state or federal taxes.
6. This bid is submitted as a legal offer and any bid when accepted by the County constitutes a firm contract.
7. Oklahoma laws require each bidder submitting a bid to a county for goods or services to furnish a notarized sworn statement of non-collusion. A form is supplied below.
8. Bids will be firm until delivered.

(DATE)

6.1291E+19

AFFIDAVIT: I, the undersigned, of lawful age, being first duly sworn on oath say that he (she) is the agent authorized by the bidder to submit the above bid. Affiant further states that the bidder has not been a party to any collusion among bidders in restraint of freedom of competition by agreement to bid at a fixed price or to refrain from bidding; or with any state official or employee as to quantity; quality or price in the prospective contract or any other terms of said prospective contract; or in any discussions between bidders and any state official concerning exchange of money or other thing of value for special consideration in the letting of a contract; that the bidder/contractor has not paid, given or donated or agreed to pay, give or donate to any officer or employee of the State of Oklahoma (or other entity) any money or other thing of value, either directly or indirectly in the procuring of the award of a contract pursuant to this bid.

Subscribed and sworn before this _____ day
of _____ 20_____ (seal)

Firm: _____

My commission expires _____ Signed by: _____ Title: _____
(MANUAL SIGNATURE OF UNDERSIGNED)

NOTARY PUBLIC (CLERK OR JUDGE) Address: _____ Phone: _____
City: _____ State _____
Zip _____

NOTE: Other terms and conditions can be added at the discretion of the county officers.

RESOLUTION
22-189
To Re-Advertise

The Board of County Commissioners, Pittsburg County, met in regular session on Monday, January 31, 2022.

WHEREAS, the Pittsburg County wishes to advertise for the following project:

Outdoor Facilities at the Pittsburg County Expo Center
Facilities to include restrooms, concession and storage areas

A bid package containing complete specifications and an "Invitation to Bid" are available at the Pittsburg County Clerk's Office, 115 E. Carl Albert Pkwy, Room 103, McAlester, Oklahoma 74501 or online at pittsburg.okcounties.org.

A mandatory pre-bid conference will be held on Monday, February 14, 2022, in the conference room of the Board of County Commissioners at 10:30 a.m.

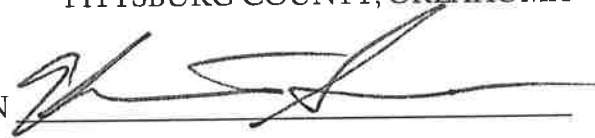
THEREFORE, each competitive bid submitted to the County must be accompanied with an affidavit for filing with the competitive bid form, as required by Title 61 O.S. § 101 - 138.

Sealed bids will be received and filed with the Pittsburg County Clerk until Friday, February 25, 2022 at 4:00 p.m. All bids received after 4:00 p.m. on Friday, February 25, 2022 WILL NOT BE OPENED. Bids will be opened on Tuesday, February 28, 2022 at 10:00 a.m. in the Board of County Commissioners Conference Room, 115 E. Carl Albert Pkwy, McAlester, Oklahoma. The Board of County Commissioners, Pittsburg County, reserves the right to reject any and all bids and re-advertise.

BOARD OF COUNTY COMMISSIONERS
PITTSBURG COUNTY, OKLAHOMA

ATTEST:

CHAIRMAN



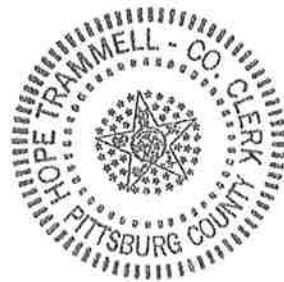
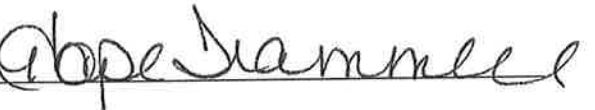
VICE CHAIRMAN



MEMBER



COUNTY CLERK



ADDITIONAL BIDDING INFORMATION

OUTDOOR FACILITIES AT THE SOUTHEAST EXPO CENTER

A MANDATORY PRE-BID CONFERENCE WILL BE HELD ON MONDAY, FEBRUARY 14, 2022.

PITTSBURG COUNTY IS RESPONSIBLE FOR ALL UTILITIES TO THE BUILDING.

HVAC WILL BE BID SEPARATE.

Dirt work shall be provided by the County.

Concrete work will be the responsibility of the awarded contractor and should be included in bid.

Plumbing Schedule, Fan Schedule, Electric Infrared Heater Schedule, Electrical Fixture Schedule and Mini-Split Systems all have manufacturers listed on the plans. Please note that you may substitute with an equivalent product but must provide manufacturer and model number for all substitutes. **PLEASE NOTE - IF NO SUBSTITUTE INFORMATION IS LISTED THEN THE BOARD OF COUNTY COMMISSIONERS WILL ASSUME THAT THE MANUFACTURER LISTED IN THE SCHEDULES WILL BE USED. THERE WILL BE NO EXCEPTIONS AFTER BIDS ARE OPENED AND ACCEPTED.**

All bids must include bid bond, business relationship affidavit, non-collusion bidding certification.

All bids shall include a start no-later date and the number of days for completion. All requests for time-extensions or change orders must be in writing to the BOCC and must be approved by the BOCC.

A written, executed contract must be signed by the BOCC and the contractor before work commences.

Successful bidder must provide performance bond and payment bond to the BOCC prior contact being executed.

Successful bidder must provide evidence of insurance prior to contract being executed.

Notice to proceed will be provided in writing once contract is executed.

Pay Applications can be requested in phases but inspections of completed work shall be done prior to approval and payment.

All questions or inquires can be directed to the Board of County Commissioners office at 918-423-1338.

Bids will be normally be awarded within 30 days for bid opening.

BID FORM

OUTDOOR FACILITIES AT THE SOUTHEAST EXPO CENTER

BIDDER NAME: _____

CONTACT PERSON/PHONE NUMBER: _____

MAILING ADDRESS: _____

CONCRETE WORK \$ _____

BUILDING: \$ _____

NO LATER THAN START DATE: _____

NUMBER OF DAYS TO COMPLETION: _____

FAN SCHEDULE

FIXTURE TAG		MANUFACTURER	MODEL# (IF APPLICABLE)
EF-1,2			
EF-3, 4, 5			

Airflow, HP, Voltage, Phase and Hertz should comply with specifications located on A-200 of prints.

Must provide integral disconnect switch backdraft damper vibration isolators and flex connections on outlet.

Must provide roof curb, NEMA 3R disconnect switch and backdraft damper

ELECTRIC INFRARED HEATER SCHEDULE

FIXTURE TAG	MANUFACTURER	MODEL	NOTES
IRH-1			RECESSED MOUNTING KIT
EF-3, 4, 5			RECESSED MOUNTING KIT

ELECTRICAL FIXTURE SCHEDULE

FIXTURE TAG	DESCRIPTION	MANUFACTURER	MODEL
A-1	4' LED STRIP LIGHT, FROSTED LENS		
EM	EMERGENCY BUG-EYE		
EX	EXIT SIGN		
WPE	EXTERIOR WALL PACK EMERGENCY BATTERY		

PLUMBING SCHEDULE:

FIXTURE TAG	DESCRIPTION	MANUFACTURER	MODEL# (IF APPLICABLE)
CP-1	CIRCULATING PUMP		
ET-1	EXPANSION TANK		
EWC-1	ELECTRIC WATER COOLER		
EWH-1	ELECTRIC WATER HEATER - 50 GALLON		
FD-1	FLOOR DRAIN		
FPHB-1	FROST PROOF WALL HYDRANT		
HL-1	HANDICAPPED WALL MOUNT, LAVATORY		
HWC-1	HANDICAPPED WATER CLOSET, FLOOR MOUNTED		
JS-1	JANITOR SINK, 24"X24"		
S-1	SINK, WALL MOUNTED		
WC-1	WATER CLOSET, FLOOR MOUNTED		
HUR-1	HANDICAPPED URINAL, WALL MOUNT		
UR-1	URINAL, WALL MOUNT		
SH-1	SHOWER, ADA		

MINI-SPLIT SYSTEM

FIXTURE TAG	MANUFACTURER	MODEL	NOTES
IU-1			208/230/1
CU-1			208/230/1

BUSINESS RELATIONSHIP AFFIDAVIT

STATE OF _____)
COUNTY OF _____) ss

I, _____, of lawful age, being first duly sworn, on oath says, that (s)he is the agent authorized by the Bidder to submit the attached bid. Affiant further states that the nature of any partnership, joint venture or other business relationship presently in effect or which existed within one year prior to the date of this statement with the Architect, Engineer or other party to the project is as follows:

Affiant further states that the names of all persons having any such business relationships and the positions they hold with their respective companies or firms are as follows:

(If none of the business relationships hereinabove mentioned exist, affiant should also state.)

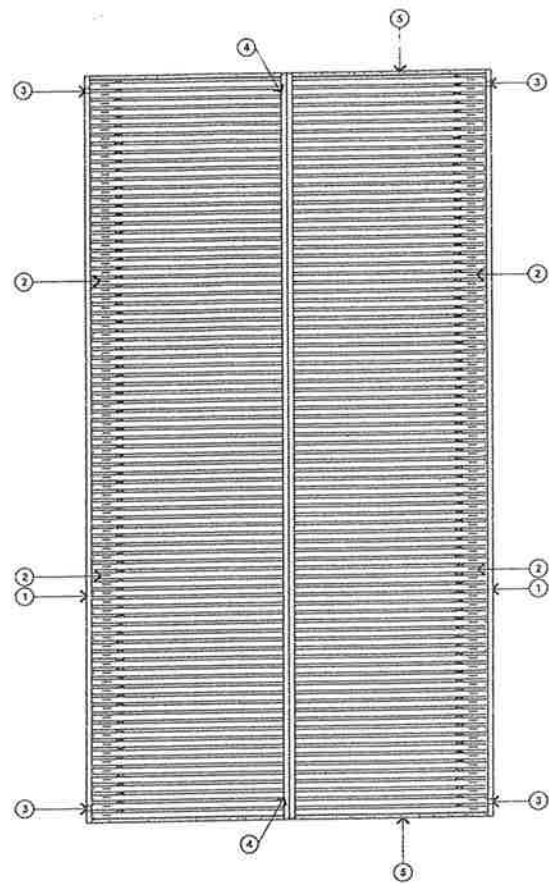
BIDDER

Subscribed and sworn to before me this _____ day of _____, 20 _____.

NOTARY PUBLIC

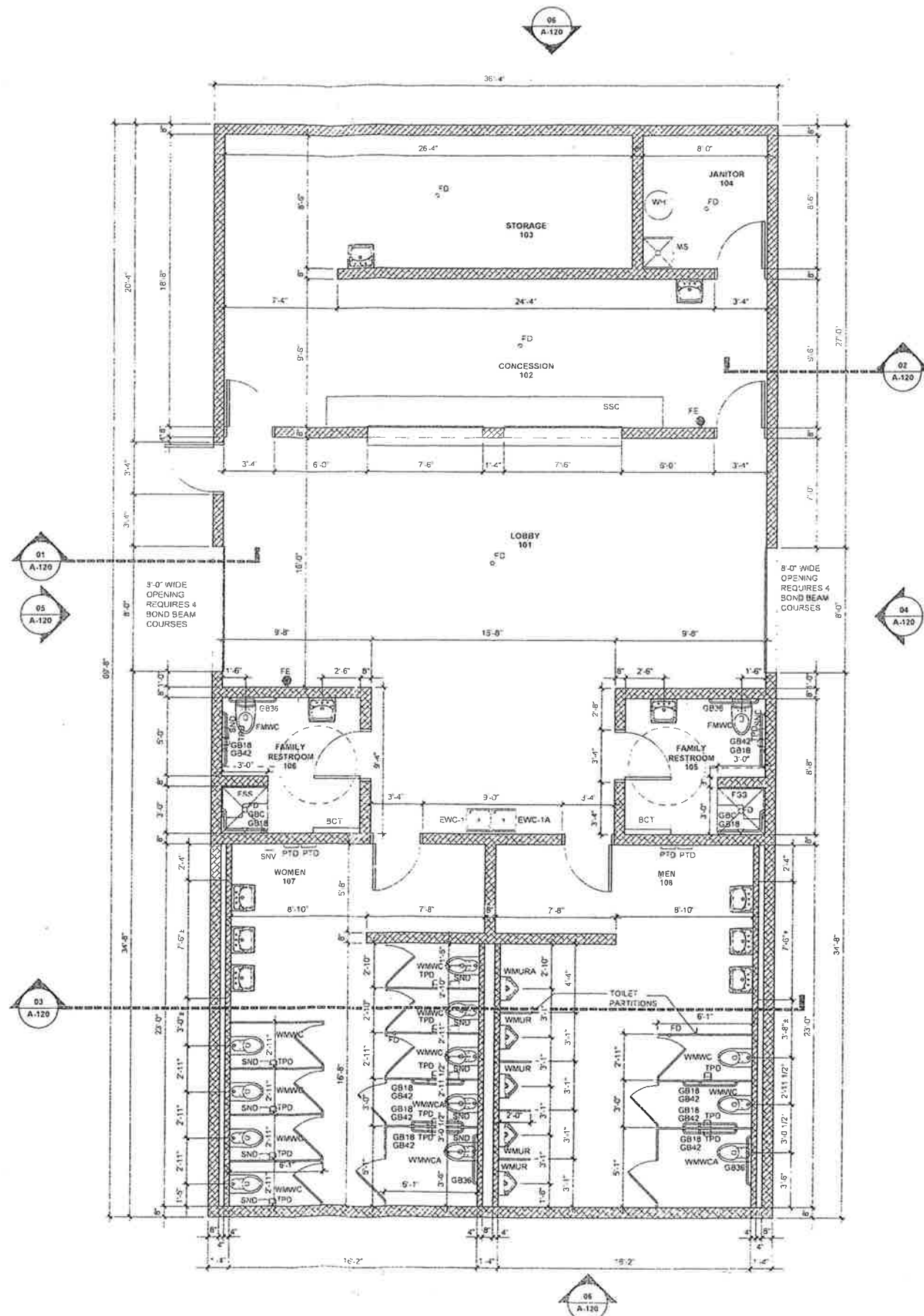
My Commission Expires:

_____ (Seal)



02 ROOF PLAN
SCALE: 1/8"=1'-0"

- ROOF PLAN KEY NOTES:**
1. PRE-FINISHED 6" METAL GUTTER. COLOR BY OWNER
 2. SNOWICE GUARD. SPACING AS RECOMMENDED PER MANUFACTURER FOR REGION.
 3. PRE-FINISHED 5-1/2" x 5-1/2" METAL DOWNSPOUTS - TIE DOWNSPOUT BACK TO FACE OF BUILDING. TYP.
 4. PRE-FINISHED METAL RIDGE CAP (COLOR TO MATCH ROOF)
 5. PRE-FINISHED GABLE END TRIM BY ROOF MFG. COLOR BY OWNER



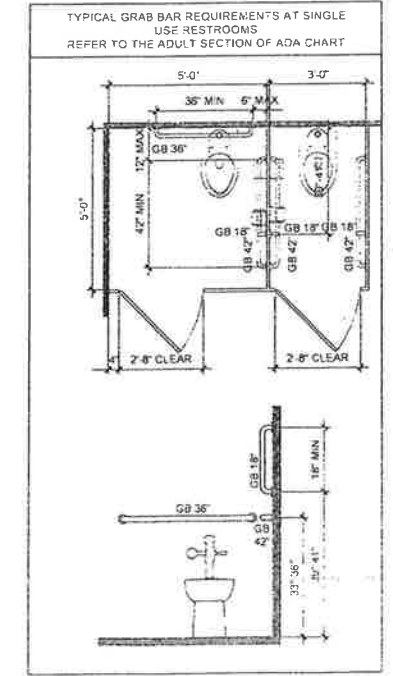
01 FLOOR PLAN
SCALE: 1/4"=1'-0"

PLAN LEGEND

	CMU WALL
EWC-1A	ADA ACCESSIBLE ELEC. WATER COOLER WITH BOTTLE FILLER. REFER PLUMBING
EWC-1	ELECTRIC WATER COOLER. REFER PLUMBING
FE	FIRE EXTINGUISHER - WALL MOUNTED
SSC	STAINLESS STEEL COUNTER
MS	MOP SINK
WH	WATER HEATER

RESTROOM PLAN ABBREVIATIONS

BCT	BABY CHANGING TABLE. REFER SPEC.
FD	FLOOR DRAIN-SLOPE SLAB TO DRAIN
FMWC	ADA FLOOR MOUNTED WATER CLOSET
FSS	ADA SHOWER W/ FOLDING SHOWER SEAT
GB36	36" GRAB BAR
GB42	42" GRAB BAR
GB18	18" GRAB BAR
GBC	CONTINUOUS GRAB BAR AT ADA SHOWER
MR	MIRROR
PTD	PAPER TOWEL DISPENSER, BY OWNER
SD	SOAP DISPENSER, BY OWNER
SND	SANITARY NAPKIN DISPOSAL, BY OWNER
SNV	SANITARY NAPKIN VENDOR, BY OWNER
TFD	TOILET PAPER DISPENSER, BY OWNER
WWCA	ADA WALL MOUNTED WATER CLOSET
WMWC	WALL MOUNTED WATER CLOSET
WMUR	WALL MOUNTED URINAL
WMURA	ADA WALL MOUNTED URINAL



PITTSBURG COUNTY EXPO
CONCESSIONS/RESTROOM BUILDING

McALESTER, OKLAHOMA

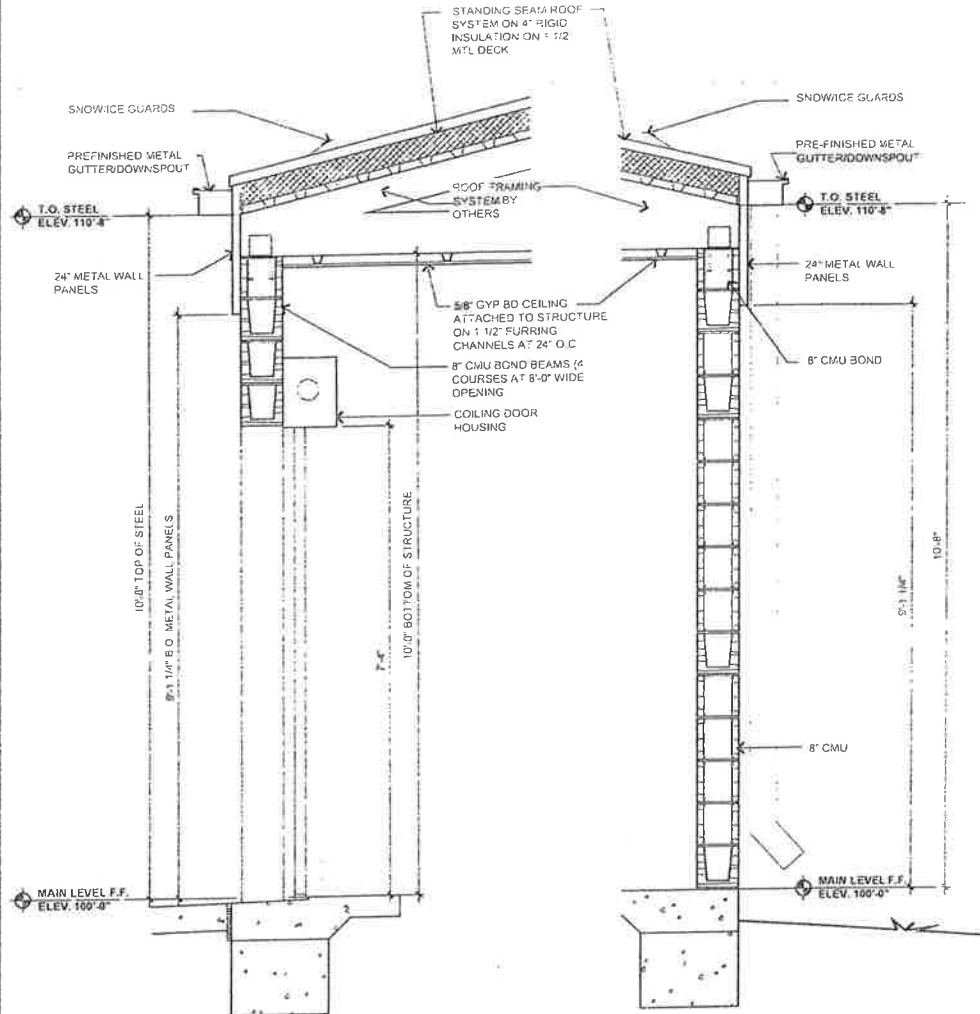
REVISIONS

REV	DATE	DESCRIPTION

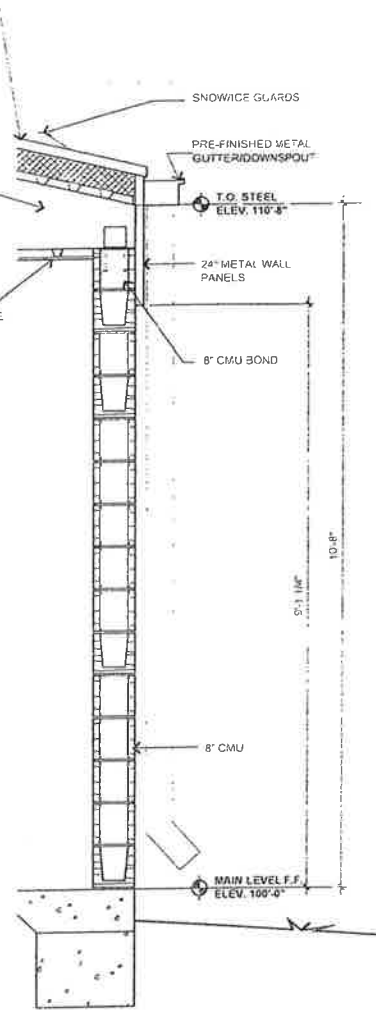
DATE: 12/20/2021

FLOOR PLAN

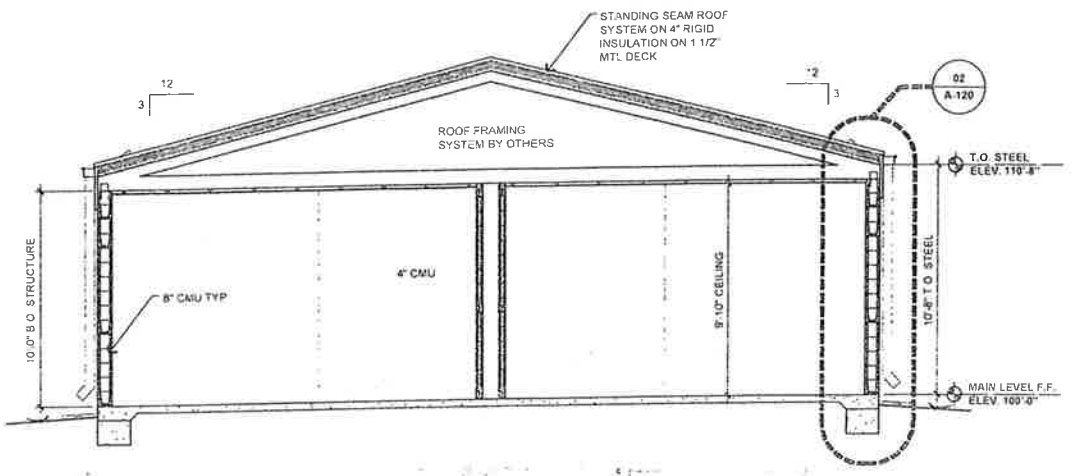
A-110



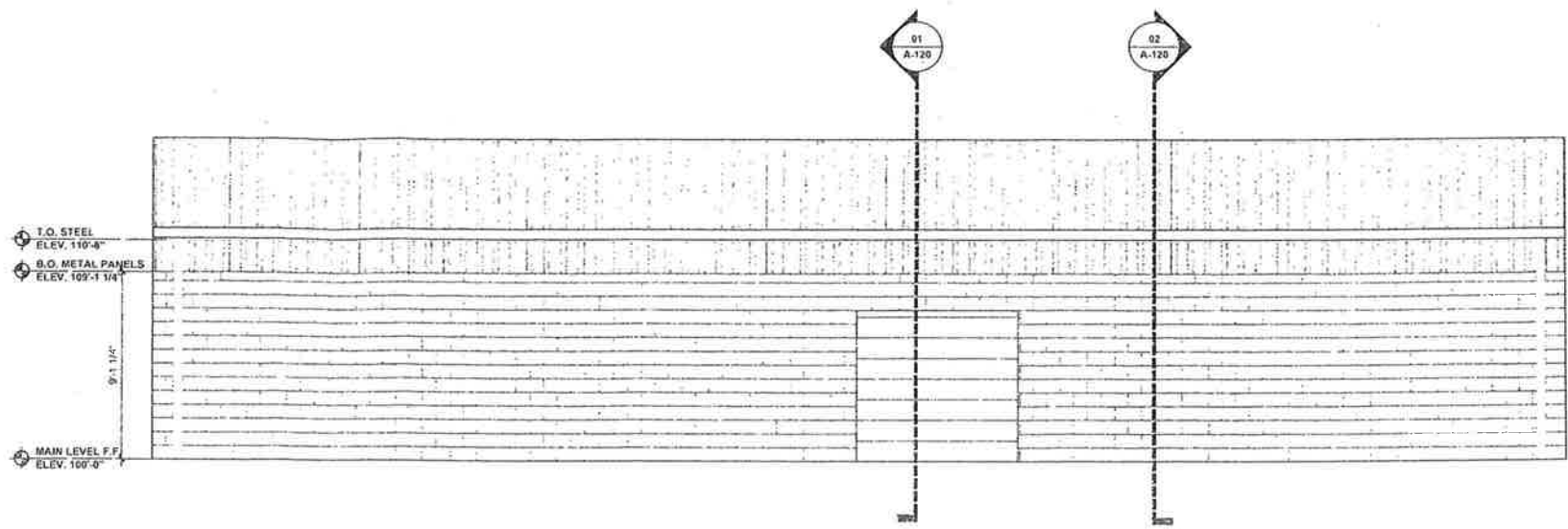
01 WALL SECTION
SCALE: 3/4"=1'-0"



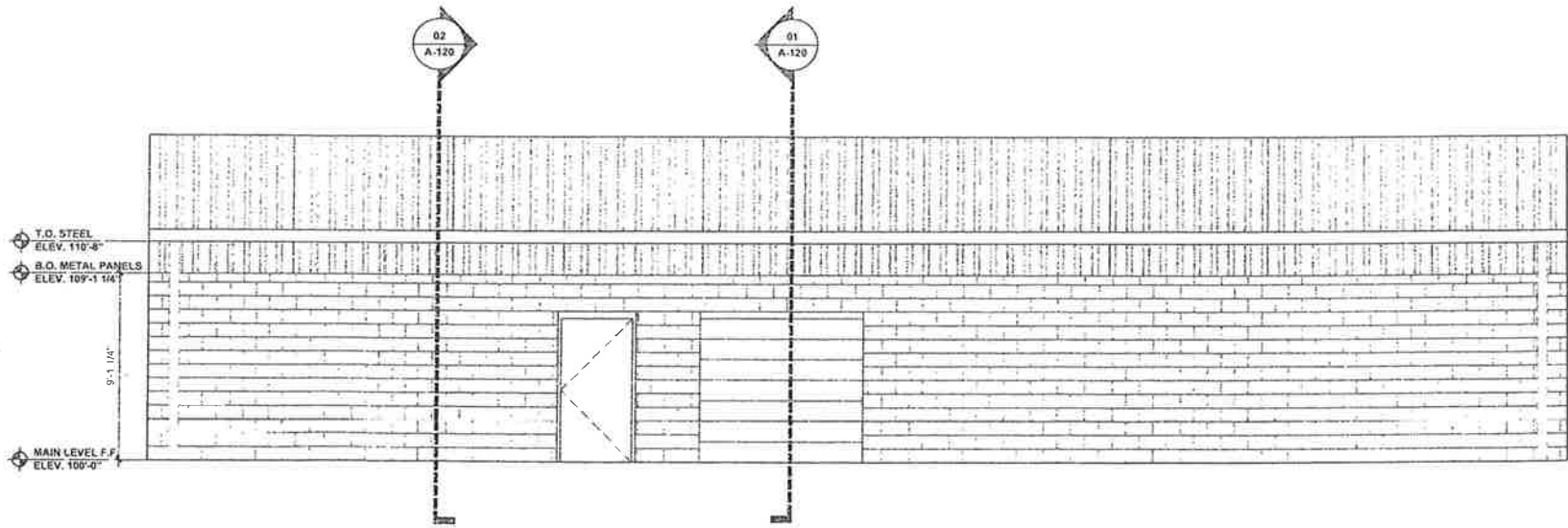
02 TYPICAL WALL SECTION
SCALE: 3/4"=1'-0"



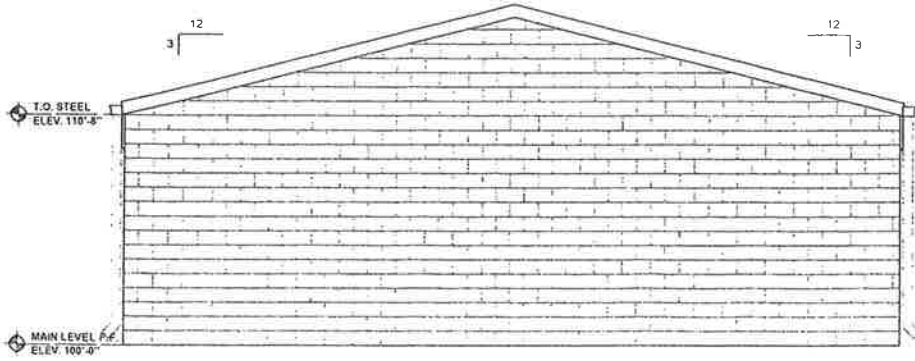
03 BUILDING SECTION
SCALE: 1/4"=1'-0"



04 ELEVATION
SCALE: 1/4"=1'-0"



05 ELEVATION
SCALE: 1/4"=1'-0"



06 ELEVATION
SCALE: 1/4"=1'-0"

PITTSBURG COUNTY EXPO
CONCESSIONS/RESTROOM BUILDING

MCALISTER, OKLAHOMA

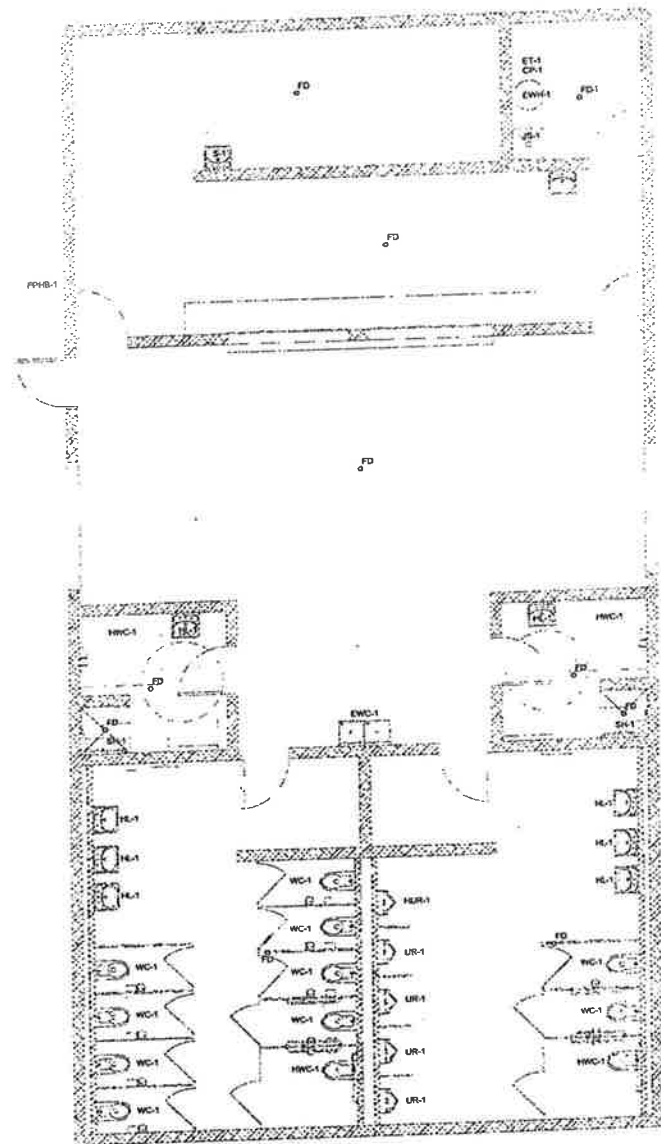
REVISIONS		
REV	DATE	DESCRIPTION

PROJ. MANAGER
DRAWN BY MB
CHECKED BY

DATE 12/20/2021
REV. 1.0

SHEET BUILDING SECTION & ELEVATIONS

A-120



PLUMBING EQUIPMENT SCHEDULE				
FIXTURE TAG	DESCRIPTION	MANUFACTURER	TRIM	ELECTRICAL REQUIREMENTS
CP-1	CIRCULATING PUMP	BELL AND GOSSETT PL-36	BRONZE BODY WITH BRASS IMPELLER, TEMP CONTROL KIT	115V 1PH 1/2 HP
ET-1	EXPANSION TANK	AMTROL ST-5		
EWC-1	ELECTRIC WATER COOLER	ELKAY EZSTUBLC	SPLIT LEVEL, WALL MOUNTED STANDARD AND HANDICAPPED	115V 1PH 350W
EW-1	ELECTRIC WATER HEATER, 30 GALLON	A O SMITH DRE-52-6	BRASS DRAIN VALVE, ANODE ROD, AUTO T-STAT, EXP TANK	208V 90W, 1PH
FD-1	FLOOR DRAIN	J R SMITH 2005		
FPH-1	FROST PROOF WALL HYDRANT	J R SMITH 559KIT		
HL-1	HANDICAPPED WALL MOUNT LAVATORY	AMERICAN STANDARD OCELYN 0321 026	AMERICAN STANDARD 2175 504 SINGLE LEVER FAUCET	
HWC-1	HANDICAPPED WATER CLOSET, FLOOR MOUNTED	AMERICAN STANDARD MADERA 3461 001	EZ-FLO 65913 OPEN FRONT SEAT, SLOAN ROYAL 111 FLUSH VALVE	
JS-1	JANITORS SINK, 24X24"	MUSTEE CUSTODIAL, MODEL 63M	FAUCET #83 920A, W/VACUUM BREAKER	
SS-1	SINK, WALL MOUNTED	ADVANCE TABCO T-PS-68	MAGUIRE BR12 1 1/2"X1 1/2" HD CHROME PLATED BRASS P-THAP W/ CLEANOUT FLDG, MAGUIRE 150A BRASS ANGLE STOP, W/ CHROME EXTENSION TUBE, FLEXIBLE CHROME PLATED COPPER RISERS, THERMOSTATIC MIXING VALVE, (EMV-8)	
WC-1	WATER CLOSET, FLOOR MOUNTED	AMERICAN STANDARD MADERA 3461 001	EZ-FLO 65913 OPEN FRONT SEAT, SLOAN ROYAL 111 FLUSH VALVE	
HUR-1	HANDICAPPED URINAL, WALL MOUNT	AMERICAN STANDARD WASHBROOK 6550 001	J R SMITH 0515 URINAL SUPPORT, AMERICAN STANDARD 9245 201 MANUAL FLUSH VALVE	
UR-1	URINAL, WALL MOUNT	AMERICAN STANDARD WASHBROOK 6550 001	J R SMITH 0515 URINAL SUPPORT, AMERICAN STANDARD 6015 051 MANUAL FLUSH VALVE	
SH-1	SHOWER ADA	BRADLEY	1/2" HD BRASS 1/4" W/ VALVE, DIVERTER VALVE, HEAD, HAND SLIDE BAR, AND VAC BREAKER	

FAN SCHEDULE		
FIXTURE TAG	EF-1, 2	EF-3, 4, 5
MANUF	GREENHECK	GREENHECK
MODEL	G-025-VG	G-025-VG
AIRFLOW	525	375
HP	1/8 HP	1/8 HP
VOLTAGE	115	115
PHASE	1	
HERTZ	60	60

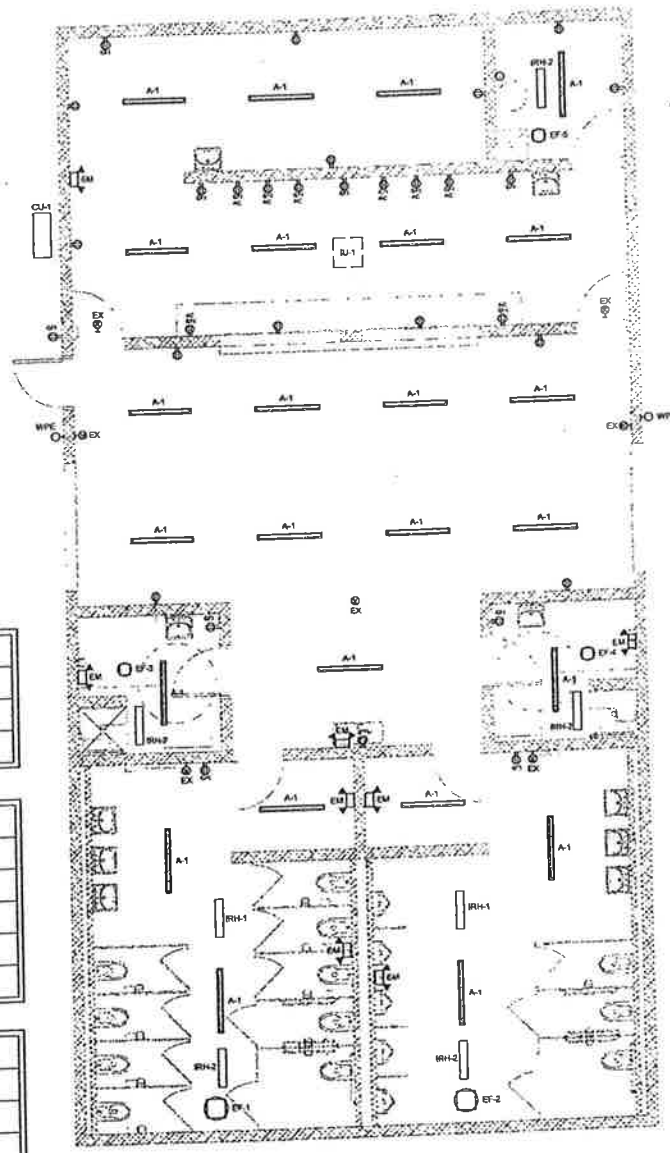
1. PROVIDE INTEGRAL DISCONNECT SWITCH, BACKDRAFT DAMPER, VIBRATION ISOLATORS, AND FLEX CONNECTIONS ON OUTLET

2. PROVIDE ROOF CURB, NEMA 3R DISCONNECT SWITCH, AND BACKDRAFT DAMPER

ELECTRIC INFRARED HEATER SCHEDULE			
FIXTURE TAG	MANUFACTURER	MODEL	NOTES
IRH-1	DETROIT RADIAN	BAH-25-B-17	RECESSED MOUNTING KIT
IRH-2	DETROIT RADIAN	BAH-25-B-10	RECESSED MOUNTING KIT

ELECTRICAL FIXTURE SCHEDULE			
FIXTURE TAG	DESCRIPTION	MFR	MODEL
A-1	4" LED STRIP LIGHT, FROSTED LENS	HE WILLIAMS	76R 4 L72 8 35 UNV
EM	EMERGENCY BUG-EYE	HE WILLIAMS	EMERGR WHT PCI D
EX	EXIT SIGN	HE WILLIAMS	EXIT R EM WHT SDT
WPE	EXTERIOR WALL PACK, EMERGENCY BATTERY	HE WILLIAMS	WVP H L30 7 40 T3 UNV EM/10MVC PC

MINI-SPLIT SYSTEMS			
FIXTURE TAG	MANUFACTURER	MODEL	NOTES
MS-1	LENNOX	MZDA18S4-2P	205/230V1
MS-2	LENNOX	MPE18S4S-1P	205/230V1



01 PLUMBING
SCALE: 3/16"=1'-0"

02 MECHANICAL/ELECTRICAL
SCALE: 3/16"=1'-0"

SCALE
10/02/2020

PITTSBURG COUNTY EXPO
CONCESSIONS/RESTROOM BUILDING
MCLESTER, OKLAHOMA

REVISIONS		
REV.	DATE	DESCRIPTION

PROJ. MANAGER
DRAWN BY
CHECKED BY

DATE: 12/20/2021
PROJECT NO.

SHEET TITLE: MECHANICAL, ELECTRICAL AND PLUMBING
SHEET NO: A-200