

Pittsburg County, Oklahoma
COUNTY PURCHASING OFFICE
 Pittsburg County Court House
 McAlester, Oklahoma
 Phone: (918) 423-4934

INVITATION TO BID

PLEASE REVIEW TERMS AND CONDITIONS ON REVERSE
 SIDE RELATING TO SUBMISSION OF THIS BID.

Notarized Affidavit completions and signature required on reverse side.

DATE ISSUED **20-Oct-14**

PAGE 1 OF _____

BID NUMBER Bid #1	BID CLOSING DATE AND HOUR November 17, 2014 @ 10:30 AM	REQUIRED DELIVERY DATE <small>Days after award of Purchase Order</small>
TERMS:		DATE OF DELIVERY:

Item	Quantity	Unit of issue	DESCRIPTION	Unit Price	Total
			Pittsburg County Economic Development Authority wishes to advertise for the following: <u>Bid Item #1-Security Camera System</u> Option #1-To replace inoperable cameras and install additional cameras Option #2-Install new system as outlined in Exhibits A-201, A-202 & A-203 <u>Bid Item #2-Proximity Card Readers</u> Option #1-To Install Proximity Readers Option #2-To Install Additional Readers <u>Bid Item #3-Door Controls</u> Option #1-To Install Automatic Door Locks with Timers Option #2-To Install Exterior Video Intercom Door Controls See specifications attached		

TERMS AND CONDITIONS

1. Sealed bids will be opened in the Commissioner's Conference Room, Pittsburg County Courthouse, McAlester, Oklahoma, at the time and date shown on the invitation to bid form.
2. Late bids will not be considered. Bids must be received in sealed envelopes (one to an envelope) with bid number and closing date written on the outside of the envelope.
3. Unit prices will be guaranteed correct by the bidder.
4. Firm prices will be F.O.B. destination.
5. Purchases by Pittsburg County, Oklahoma, are not subject to state or federal taxes.
6. This bid is submitted as a legal offer and any bid when accepted by the County constitutes a firm contract.
7. Oklahoma laws require each bidder submitting a bid to a county for goods or services to furnish a notarized sworn statement of non-collusion. A form is supplied below.
8. Bids will be firm until completion of project.

(DATE)

AFFIDAVIT: I, the undersigned, of lawful age, being first duly sworn on oath say that he (she) is the agent authorized by the bidder to submit the above bid. Affiant further states that the bidder has not been a party to any collusion among bidders in restraint of freedom of competition by agreement to bid at a fixed price or to refrain from bidding; of with any state official or employee as to quantity; quality or price in the prospective contract or any other terms of said prospective contract; or in any discussins between bidders and any state official concerning exchange of money or other thing of value for special consideration in the letting of a contract; that the bidder/contractor has not paid, given or donated or agreed to pay, give or donate to any officer or employee of the State of Oklahoma (or other entity) any money or other thing of value, either directly or indirectly in the procuring of the award of a contract pursuant to this bid.

Subscribed and sworn before this _____ day
of _____ 20_____ (seal)

Firm: _____

My commission expires _____ Signed by: _____ Title: _____

(MANUAL SIGNATURE OF UNDERSIGNED)

NOTARY PUBLIC (CLERK OR JUDGE) Address: _____ Phone: _____

City: _____ State _____

Zip _____

NOTE: Other terms and conditions can be added at the discretion of the county officers.

RESOLUTION
To
Advertise

The Pittsburg County Economic Development Authority met in regular session on Monday, October 20, 2014

WHEREAS, the Pittsburg County Economic Development Authority wishes to advertise for the following:

Bid Item #1 - Security Camera System
Option #1 - To Replace inoperable cameras and install additional cameras
Option #2 - Install new system as outlined in Exhibits A-201, A-202 & A-203

Bid Item #2 - Proximity Card Readers
Option #1 - To Install Proximity Readers
Option #2 - To Install Additional Readers

Bid Item #3 - Door Controls
Option #1 - To Install Automatic Door Locks with Timers
Option #2 - To Install Exterior Video Intercom Door Controls

A bid package containing complete specifications and an "Invitation to Bid" are available in the Pittsburg County Clerk's Office, 115 E. Carl Albert Pkwy., Room 100, McAlester, Oklahoma 74501 or on the county website at pittsburg.okcounties.org.

A Pre-Bid Conference has been set for Monday, November 3, 2014 at 2:00 p.m. in the Conference Room of the Board of County Commissioners, Pittsburg County Courthouse, 115 E. Carl Albert Pkwy., McAlester, Oklahoma.


THEREFORE, each competitive bid submitted to the County must be accompanied with an affidavit for filing with the competitive bid form, as required by 61 O.S. § 138.

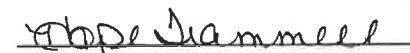
Sealed bids will be received and filed with the Pittsburg County Clerk and opened on Monday, November 17 at 10:30 a.m. in the conference room of the Board of County Commissioners, Pittsburg County Courthouse, 115 E. Carl Albert Pkwy., McAlester, Oklahoma. Contract will be awarded to the lowest or best bidder. The Pittsburg County Economic Development Authority reserves the right to reject all bids and re-advertise.

PITTSBURG COUNTY
ECONOMIC DEVELOPMENT AUTHORITY



CHAIRMAN

VICE-CHAIRMAN

MEMBER

ATTEST:

SECRETARY, E.D.A.



Mandatory Pre-Bid Conference:

All Contractors wishing to submit a proposal for this work will be required to attend a mandatory pre-bid conference to familiarize themselves with existing conditions. All questions submitted on or before Q&A period will be answered no later than 7 days prior to bid closing date.

Date of Notice of Initiation of Bid	-	October 20, 2014
Mandatory Pre-Bid Conference	-	November 3, 2014
Q&A Period	-	November 10 – 14, 2014
Bid Opening	-	November 17, 2014

Surveillance and Access Control Systems Scope of Work

Provide all materials and labor for the complete installation of surveillance and access control systems at the Pittsburg County Courthouse as show on Exhibits A-201, A-202 and A-203. The successful bidder shall provide all miscellaneous cable management components and hardware, cameras, mounting systems and enclosures, cabling, switches, DVR's, licenses, 1500VA battery backup and software required for the surveillance system. Access control system will consist of all intercom kits, access controllers, power supplies, cabling, prox point plus readers, software, single and double door hardware. All systems will be controlled from Security Room 133 or as directed by Pittsburg County and will interface with existing systems. Any software updates issued following final acceptance and during the manufacturer's warranty period will be at no charge to the owner.

All work will commence with 30 days of notice of award and will be coordinated with the Pittsburg County Commissioners. Completion, including all commissioning and training must be completed within 60 days from notice of award.

Successful bidder will hold a pre-work conference, scheduled by the Pittsburg County Commissioners, to cover the following items:

1. Review of system components and function
2. Schedule of activities
3. Phasing of work
4. Commissioning
5. Payment procedures

Warranties:

1 year warranty on all workmanship, a minimum of 3 years or manufacturer's standard warranty for parts, components or services; beginning on the date of final acceptance by Pittsburg County.

Bid Item #1 – Security Camera System

Option #1 – To replace inoperable cameras and install additional cameras

Replace Cameras in the following locations:

<u>1st Floor</u>			<u>2nd Floor</u>		
Exterior North Alley	-	Type 3	Lobby 277	-	Type 1
Room 138	-	Type 2	Corridor 279	-	Type 2
Room 158	-	Type 2			

3rd Floor

Room 304	-	Type 2
Corridor 306	-	Type 2

Install Additional Cameras to the following locations:

<u>1st Floor</u>			<u>2nd Floor</u>		
Room 102	-	Type 2	Cashier 225	-	Type 2
Vault 109 Mezzanine	-	Type 2	Corridor 249	-	Type 2
Stair 1	-	Type 2	Lobby 250	-	Type 1
Lobby 115	-	Type 1	Lobby 277	-	Type 1
Lobby 148	-	Type 2	Exterior 277	-	Type 2
Vestibule 152	-	Type 2			

3rd Floor

Holding Room 302	-	Type 4
Corridor 301	-	Type 2

Type 1 should be the equivalent to BOSCH NUC-20012-F2
Type 2 should be the equivalent to BOSCH NIN-50022-V3
Type 3 should be the equivalent to BOSCH NTI-50022-V3
Type 4 should be the equivalent to BOSCH NCN-90022-F1

Option #2 – Install new system as outlined in Exhibits 1, 2 & 3

Bid Item #2 – Proximity Card Readers

Option #1 – To Install Readers in the following locations

<u>1st Floor</u>		<u>2nd Floor</u>	
Door 111A	- Type 7	Holding 241	- Type 7
Door 111B	- Type 7	Door 238	- Type 7
Door 114	- Type 7	Door 245	- Type 7
Door 133	- Type 7	Door 228	- Type 7
Door 151	- Type 7		
Exterior Door 148E	- Type 6		
Exterior Door 152	- Type 6		
Exterior Door 100B	- Type 6		
Exterior Door 148A	- Type 6		

3rd Floor

Holding 302	- Type 7
Door 328	- Type 7
Door 316	- Type 7
Door 325B	- Type 7

Option #2 – To Install Additional Readers in the following locations

<u>1st Floor</u>		<u>2nd Floor</u>	
Door 101	- Type 7	Door 202	- Type 7
Door 115	- Type 7	Door 215	- Type 7
Door 121	- Type 7	Door 226A	- Type 7
Door 137	- Type 7	Door 235B	- Type 7
Door 162	- Type 7		
Stair 4	- Type 7		

3rd Floor

Door 304	- Type 7
Door 322	- Type 7

Type 6 Exterior Proximity Reader should be equivalent to PAXTON 682-825-US
Type 7 Interior Proximity Reader should be equivalent to PAXTON 682-825-US

Bid Item #3 – Door Controls

Option #1 – To Install Automatic Door Locks w/Timer

Doors 100A, 100B, 100C & 148A

Option #2 – To Install Exterior Video Door Control

Equivalent to PAXTON 337-932-US

Doors 277 & 257

SECURITY UPDATES

Bid Item #1 – Security Camera System

Option #1 – To replace inoperable cameras
and install additional cameras \$ _____

Option #2 – Install new system as outlined
in Exhibits 1, 2 & 3 \$ _____

Bid Item #2 – Proximity Card Readers

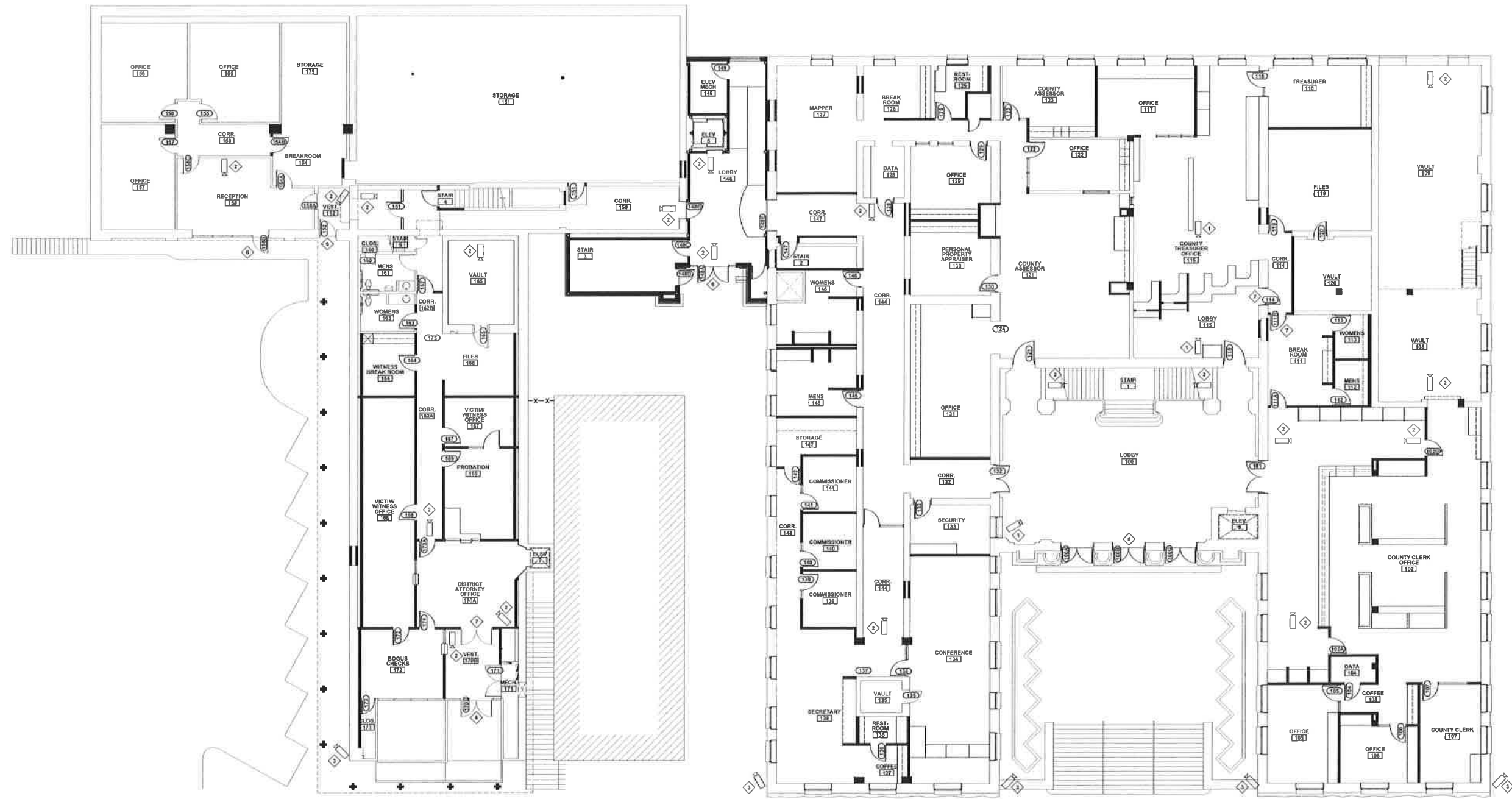
Option #1 – To Install Readers \$ _____

Option #2 – To Install Additional Readers \$ _____

Bid Item #3 – Door Controls

Option #1 – To Install Automatic Door
Locks w/Timer \$ _____

Option #2 – To Install Exterior Video
Intercom Door Controls \$ _____



1 FIRST FLOOR PLAN
 SCALE: 1/8"=1'-0"
 NORTH

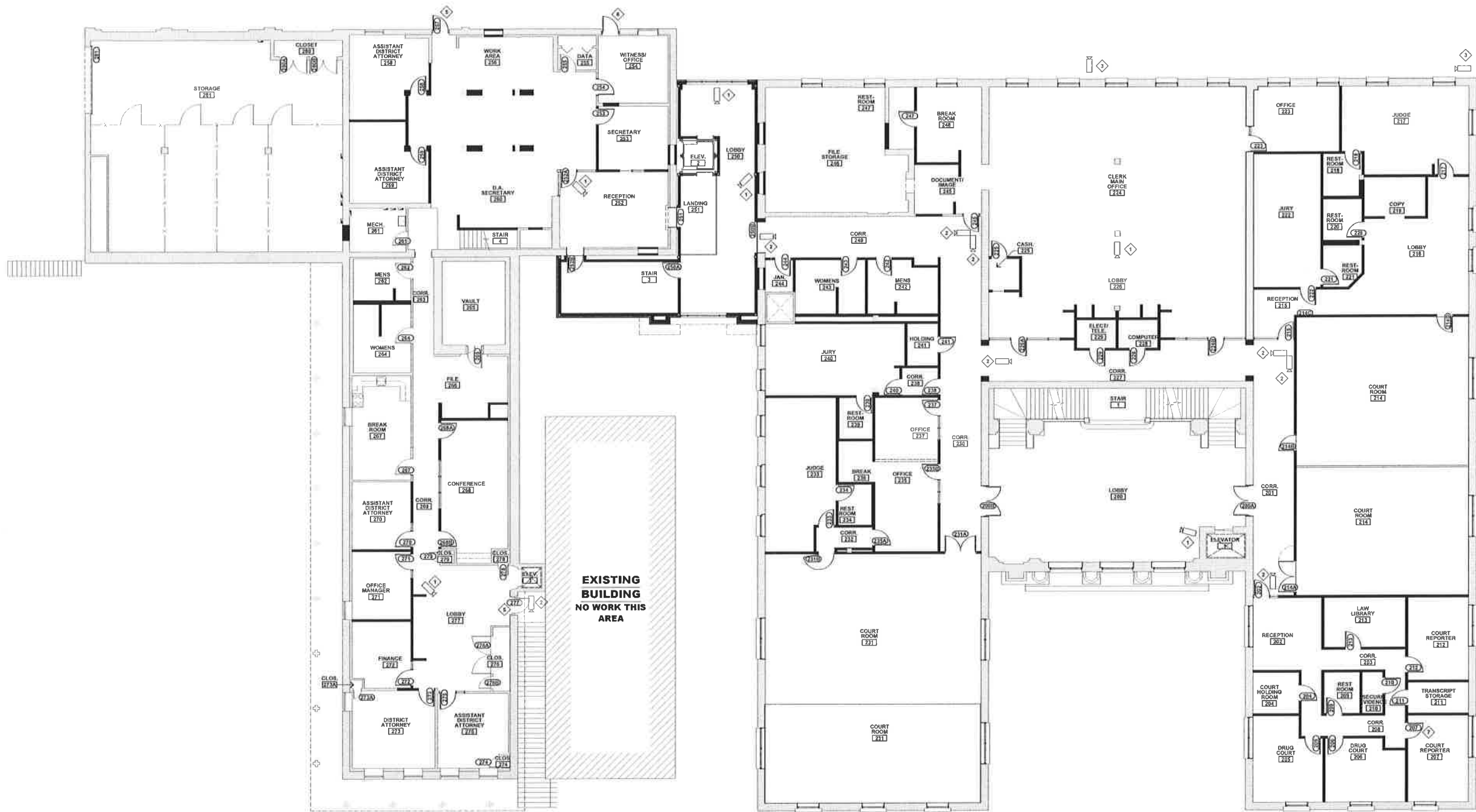
SURVEILLANCE/ACCESS CONTROL LEGEND:

◊	FLEXIDOME IP MICRO 2000 EQUAL TO BOSCH NUC-20012-F2
◊	FLEXIDOME IP INDOOR 8000 EQUAL TO BOSCH NIV-50022-V3
◊	DIVION IP BULLET 5000 HD EQUAL TO BOSCH NTV-50022-V3
◊	FLEXIDOME IP CORNER 9000 MP EQUAL TO BOSCH NCH-90022-F1
◊	EXTERIOR VIDEO INTERCOM DOOR CONTROL EQUAL TO PAXTON 337-802-US
◊	EXTERIOR PROXIMITY READER EQUAL TO PAXTON 882-825-US
◊	INTERIOR PROXIMITY READER EQUAL TO PAXTON 882-825-US

PITTSBURG COUNTY COURTHOUSE
 SURVEILLANCE/ACCESS CONTROL UPGRADES
 McALESTAR, OKLAHOMA








SHEET TITLE
FIRST FLOOR PLAN

SHEET NO.
A-201



1 SECOND FLOOR PLAN
SCALE: 1/8"=1'-0" 

SURVEILLANCE/ACCESS CONTROL LEGEND:

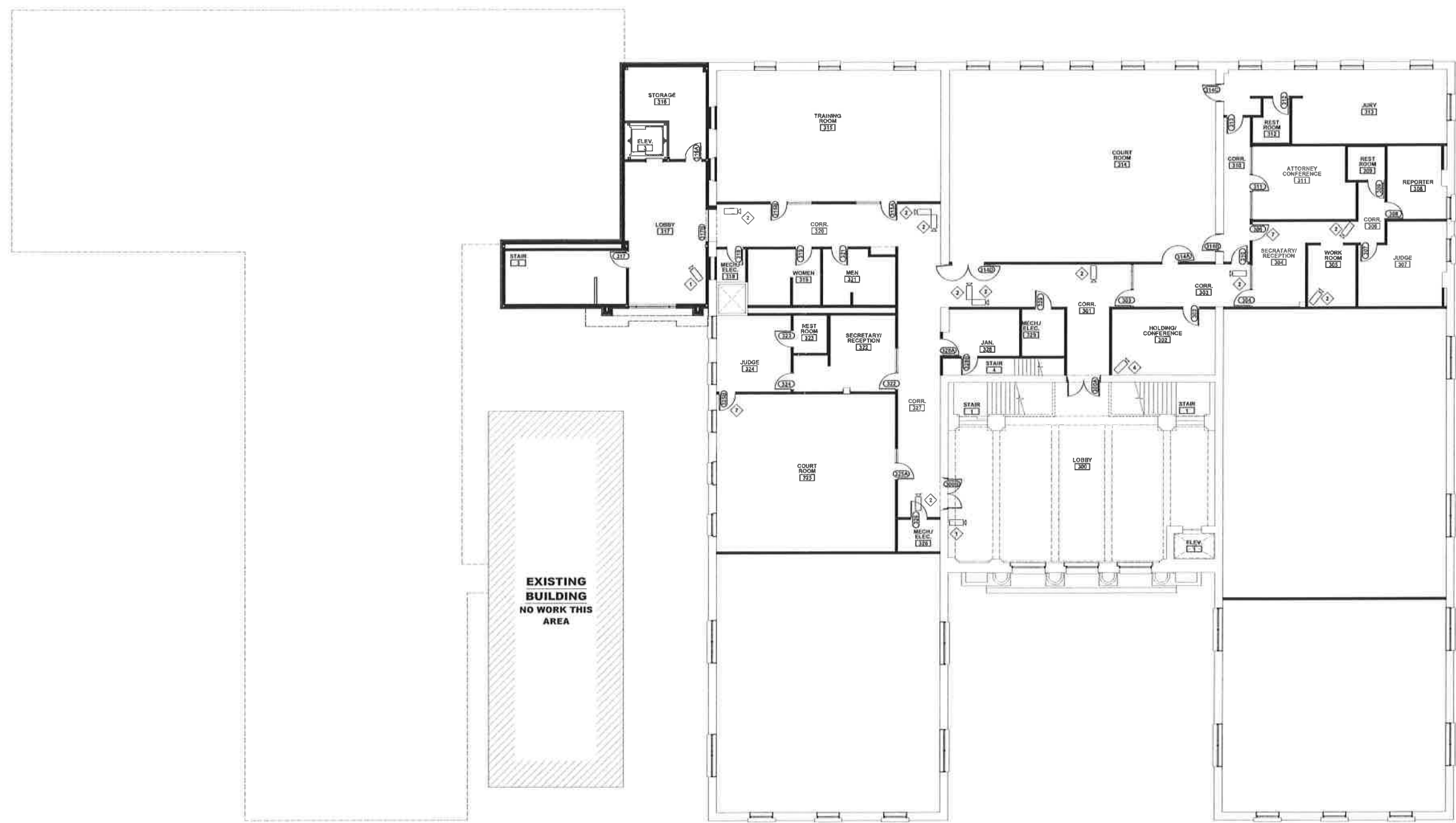
-  FLEXIDOME IP MICRO 2000 EQUAL TO BOSCH NJC-20012 F2
-  FLEXIDOME IP INDOOR 3000 EQUAL TO BOSCH NHI-30022 V3
-  DINKON IP BULLET 5000 HD EQUAL TO BOSCH NHI-50022 V3
-  FLEXIDOME IP CORNER 3000 MP EQUAL TO BOSCH NCH-30022 F1
-  EXTERIOR VIDEO INTERCOM DOOR CONTROL EQUAL TO PAXTON 337-932-US
-  EXTERIOR PROXIMITY READER EQUAL TO PAXTON 682-825-US
-  INTERIOR PROXIMITY READER EQUAL TO PAXTON 682-825-US

PITTSBURG COUNTY COURTHOUSE
SURVEILLANCE/ACCESS CONTROL UPGRADES

McALESTAR, OKLAHOMA

SHEET TITLE
SECOND FLOOR PLAN

SHEET NO.
A-202



1 THIRD FLOOR PLAN
SCALE: 1/8"=1'-0"



SURVEILLANCE/ACCESS CONTROL LEGEND:

- ◊ FLEXIDOME IP MICRO 2000 EQUAL TO BOSCH NUC-20012-F2
- ◊ FLEXIDOME IP INDOOR 5000 EQUAL TO BOSCH NIN-50022-V3
- ◊ DMRX IP BULLET 5000 HD EQUAL TO BOSCH NFI-50022-V3
- ◊ FLEXIDOME IP CORNER 9000 MP EQUAL TO BOSCH NCC-90022-F1
- ◊ EXTERIOR VIDEO INTERCOM DOOR CONTROL EQUAL TO PAXTON 337-892-US
- ◊ EXTERIOR PROXIMITY READER EQUAL TO PAXTON 882-825-US
- ◊ INTERIOR PROXIMITY READER EQUAL TO PAXTON 882-825-US

PITTSBURG COUNTY COURTHOUSE
SURVEILLANCE/ACCESS CONTROL UPGRADES

McALESTAR, OKLAHOMA

SHEET TITLE
THIRD FLOOR PLAN

SHEET NO.
A-203