

Pittsburg County, Oklahoma
COUNTY PURCHASING OFFICE
 Pittsburg County Court House
 McAlester, Oklahoma
 Phone: (918) 423-4934

INVITATION TO BID

PLEASE REVIEW TERMS AND CONDITIONS ON REVERSE SIDE RELATING TO SUBMISSION OF THIS BID.

Notarized Affidavit completions and signature required on reverse side.

DATE ISSUED 21-Nov-16
PAGE 1 OF _____

BID NUMBER BID # 20	BID CLOSING DATE AND HOUR December 5, 2016 @ 10:00AM	REQUIRED DELIVERY DATE Days after award of Purchase Order
TERMS:		DATE OF DELIVERY:

Item	Quantity	Unit of issue	DESCRIPTION	Unit Price	Total
			<p>Pittsburg County District # 3 wishes to advertise for the following:</p> <p>The Construction of a chain link fence to surround the perimeter of the District # 3 yard, located at 1906 N. 15th, McAlester, Oklahoma</p> <p>See Specifications Attached</p>		

TERMS AND CONDITIONS

1. Sealed bids will be opened in the Commissioner's Conference Room, Pittsburg County Courthouse, McAlester, Oklahoma, at the time and date shown on the invitation to bid form.
2. Late bids will not be considered. Bids must be received in sealed envelopes (one to an envelope) with bid number and closing date written on the outside of the envelope.
3. Unit prices will be guaranteed correct by the bidder.
4. Firm prices will be F.O.B. destination.
5. Purchases by Pittsburg County, Oklahoma, are not subject to state or federal taxes.
6. This bid is submitted as a legal offer and any bid when accepted by the County constitutes a firm contract.
7. Oklahoma laws require each bidder submitting a bid to a county for goods or services to furnish a notarized sworn statement of non-collusion. A form is supplied below.
8. Bids will be firm until delivered.

(DATE)

AFFIDAVIT: I, the undersigned, of lawful age, being first duly sworn on oath say that he (she) is the agent authorized by the bidder to submit the above bid. Affiant further states that the bidder has not been a party to any collusion among bidders in restraint of freedom of competition by agreement to bid at a fixed price or to refrain from bidding; or with any state official or employee as to quantity; quality or price in the prospective contract or any other terms of said prospective contract; or in any discussions between bidders and any state official concerning exchange of money or other thing of value for special consideration in the letting of a contract; that the bidder/contractor has not paid, given or donated or agreed to pay, give or donate to any officer or employee of the State of Oklahoma (or other entity) any money or other thing of value, either directly or indirectly in the procuring of the award of a contract pursuant to this bid.

Subscribed and sworn before this _____ day
of _____ 20_____ (seal)

My commission expires _____ Signed by: _____ Title: _____
Firm: _____
(MANUAL SIGNATURE OF UNDERSIGNED)

NOTARY PUBLIC (CLERK OR JUDGE)
Address: _____ Phone: _____
City: _____ State _____
Zip _____

NOTE: Other terms and conditions can be added at the discretion of the county officers.

RESOLUTION
#17-109
To Re-Advertise

The Board of County Commissioners, Pittsburg County, met in regular session on Monday, November 21, 2016.

WHEREAS, Pittsburg County District #3 wishes to advertise for the following:

The Construction of a chain link fence to surround the perimeter of the District #3 yard, located at 1906 N. 15th, McAlester, Oklahoma

A bid package containing complete specifications and an "Invitation to Bid" are available at the Pittsburg County Clerk's Office, Pittsburg County Courthouse, 115 E. Carl Albert Pkwy, Room 103, McAlester, OK 74501 or online at pittsburg.okcounties.org.

THEREFORE, each competitive bid submitted to the County must be accompanied with an affidavit for filing with the competitive bid form, as required by 61 O.S. § 138.

Sealed bids will be received and filed with the Pittsburg County Clerk and opened on Monday, December 5, 2016 at 10:00 a.m. in the Board of County Commissioners Conference Room, Pittsburg County Courthouse, 115 E. Carl Albert Pkwy., McAlester, Oklahoma. Contract will be awarded to the lowest or best bidder. The Board of County Commissioners, Pittsburg County, reserve the right to reject any and all bids and re-advertise.

BOARD OF COUNTY COMMISSIONERS
PITTSBURG COUNTY, OKLAHOMA


CHAIRMAN


MEMBER


MEMBER

ATTEST:




COUNTY CLERK

CHAINLINK FENCE SPECIFICATION

FABRIC: 72" 9 GA. G.A.W. (2" Mesh) BK CHAIN LINK FABRIC.

TOP RAIL: 1 5/8" O.D. DQ-40 PIPE, 1.83 lbs. per foot. Top rail 21' in length, joined with 1 5/8" SLEEVE.

LINE POST: 2 3/8" O.D. DQ-40 PIPE POST, 3.11 lbs. per foot. Line posts set 10' on center maximum spacing. Concrete footing: 10" diameter, 36" depth.

TERMINAL POST: 2 7/8" O.D. DQ-40 PIPE POST, 4.64 lbs. per foot. Concrete footing: 12" diameter, 36" depth.

GATES: SINGLE SWING GATE: Framework of 1 7/8" DQ-40 PIPE, 2.28 lbs. per foot.
CANTILEVER GATE: Framework of 2 3/8" DQ-40 PIPE, 3.12 lbs. per foot.
Gates braced and trussed as necessary. Same fabric as fence. Barbed wire included on all gates.

GATE POST: SINGLE SWING GATE: 4" O.D. DQ-40 PIPE POST, 6.56 lbs. per foot. Concrete footing: 16" diameter, 36" depth.
CANTILEVER GATE: 4" O.D. DQ-40 PIPE POST, 6.56 lbs. per foot. Concrete footing: 16" diameter, 36" depth.

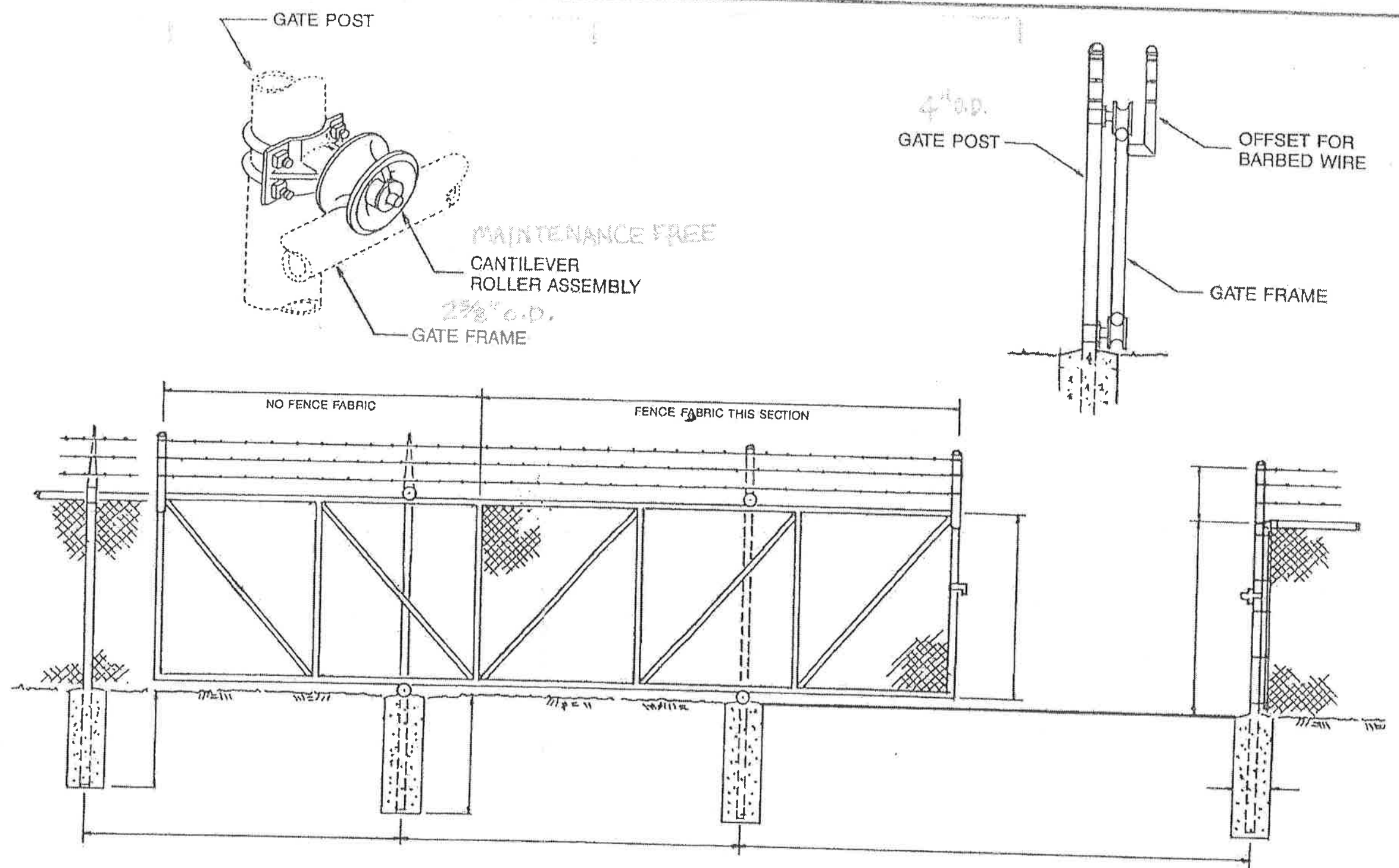
TENSION WIRE: 7 GA. COIL SPRING .80 ZINC (COIL) TENSION WIRE attached to bottom of fence fabric with 12 1/2 GA. STEEL HOG RING spaced 24" on center.

BARBED WIRE: 3 strands of 4 PT. GALV. CLASS III IMP. BARB WIRE on 45 Deg. PRESSED STEEL BARB WIRE ARM.

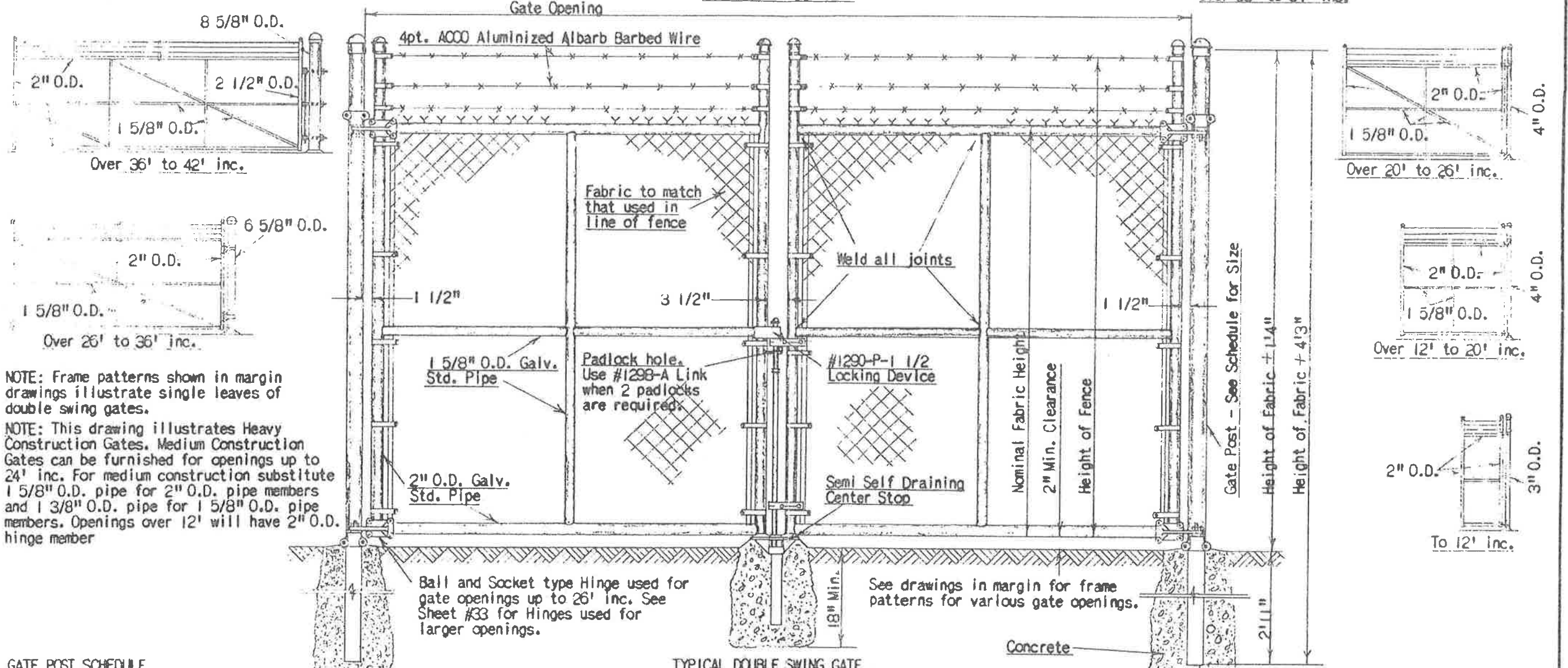
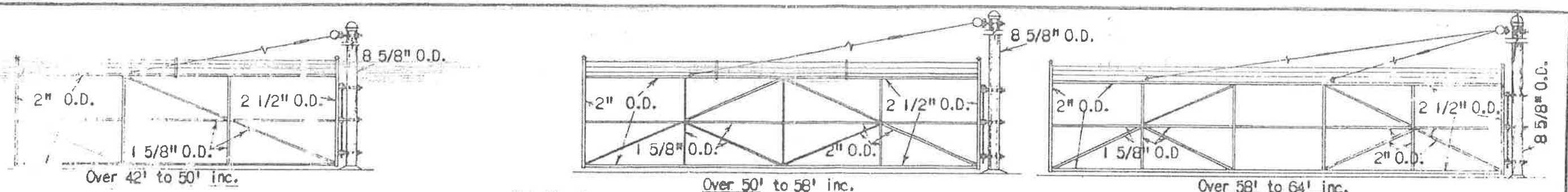
FITTINGS: REGULAR BRACE BAND & CARRIAGE BOLT, PRESSED STEEL COMBO RAIL-END, 45 Deg. PRESSED STEEL BARB WIRE ARM, PRESSED STEEL CAP, 3/16" X 3/4" TENSION BAR, REGULAR TENSION BAND & CARRIAGE BOLT.

TIE WIRE: 8 1/4" 9 GA. ALUMINUM TIE WIRE & 6 1/2" 9 GA. ALUMINUM TIE WIRE spaced 15" on center for line posts & 24" on center for rails.

POST FOOTING: TRUCK POURED CONCRETE.

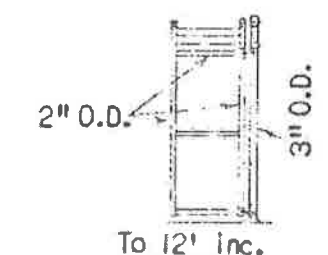
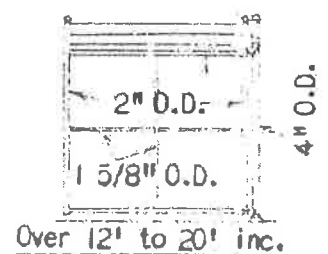
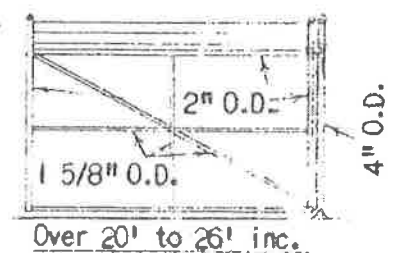


SUBMITTED BY	SUBMITTED TO	TYPICAL CANTILEVER GATE WITH BARBED WIRE	CONTRACTOR		STANDARD DETAIL	
			ARCHITECT			
JOB / PROJECT	JOB / PROJECT	JOB / PROJECT	ENGINEER		COMPILED BY	DWG. NO. SD-432R
					DATE	SHT. _____ OF _____



NOTE: Frame patterns shown in margin drawings illustrate single leaves of double swing gates.

NOTE: This drawing illustrates Heavy Construction Gates. Medium Construction Gates can be furnished for openings up to 24' inc. For medium construction substitute 1 5/8" O.D. pipe for 2" O.D. pipe members and 1 3/8" O.D. pipe for 1 5/8" O.D. pipe members. Openings over 12' will have 2" O.D. hinge member



Gate Opening	Pipe Size	
	Heavy Const.	Medium Const.
To 6' inc.	3" O.D.	2 1/2" O.D.
Over 6' to 12' inc.	3" O.D.	3" O.D.
Over 12' to 26' inc.	4" O.D.	4" O.D. (To 24' only)
Over 26' to 36' inc.	6 5/8" O.D.	
Over 36' to 64' inc.	8 5/8" O.D.	

DESCRIPTION OF CHANGE				DATE	NO.	WEIGHT EACH	LBS. (RAW STOCK)	SPECIFICATIONS			
								MATERIAL			
								NAME			
								Double Swing Gates for Style 3 TR Fence			
				DRAWN BY		TRACED BY		CHECKED BY		APPROVED BY	
				DATE		DATE		SCALE		JCF	
				10-25-56		Sheet # 32					